

BALTRAD - Advanced Weather Radar network

Road Construction and Traffic Applications *Presentation for End-user Workshop*

Michael R. Rasmussen¹
Michael Quist²

¹*Dept. of Civil Engineering, Aalborg University, Denmark*
²*Danish Road Directorate, Denmark*



URBANWATER
Weather Radar Applications

Flooding of infrastructure



Photo: Bente Schou



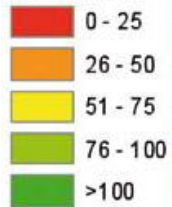
Emergency response

Photo: Nikolaj Svennevig

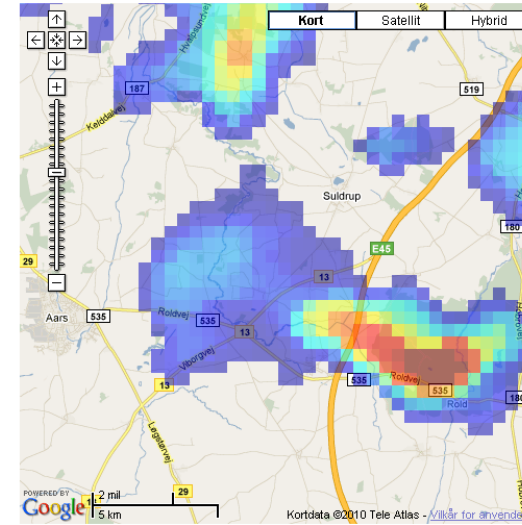


Photo: Nikolaj Svennevig

Lavnings mm regn



Aalborg Vejrradar Arkiv



Angiv dato og tidspunkt:

8 Jul 2008

20 00

Hvor mange timers data skal der vises?

2 timer

Angiv animations hastighed:

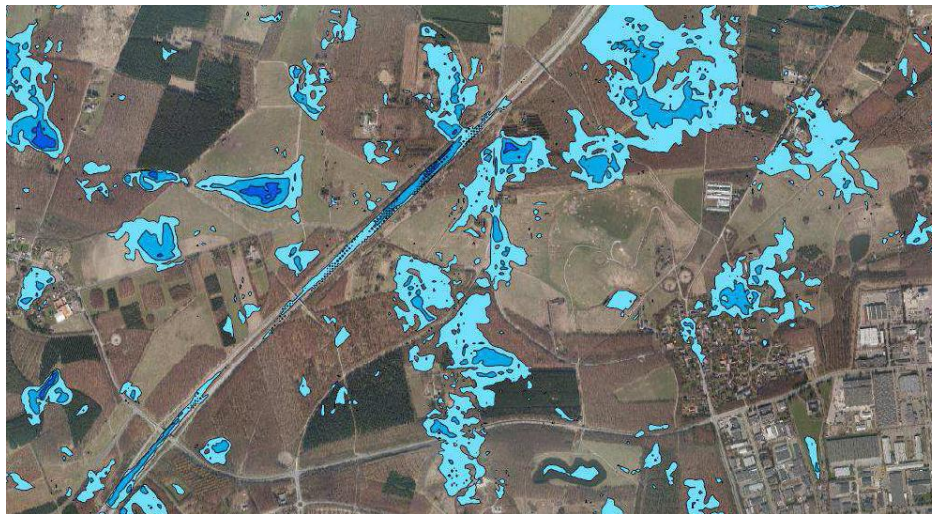
1000 ms

Start/Stop Animation

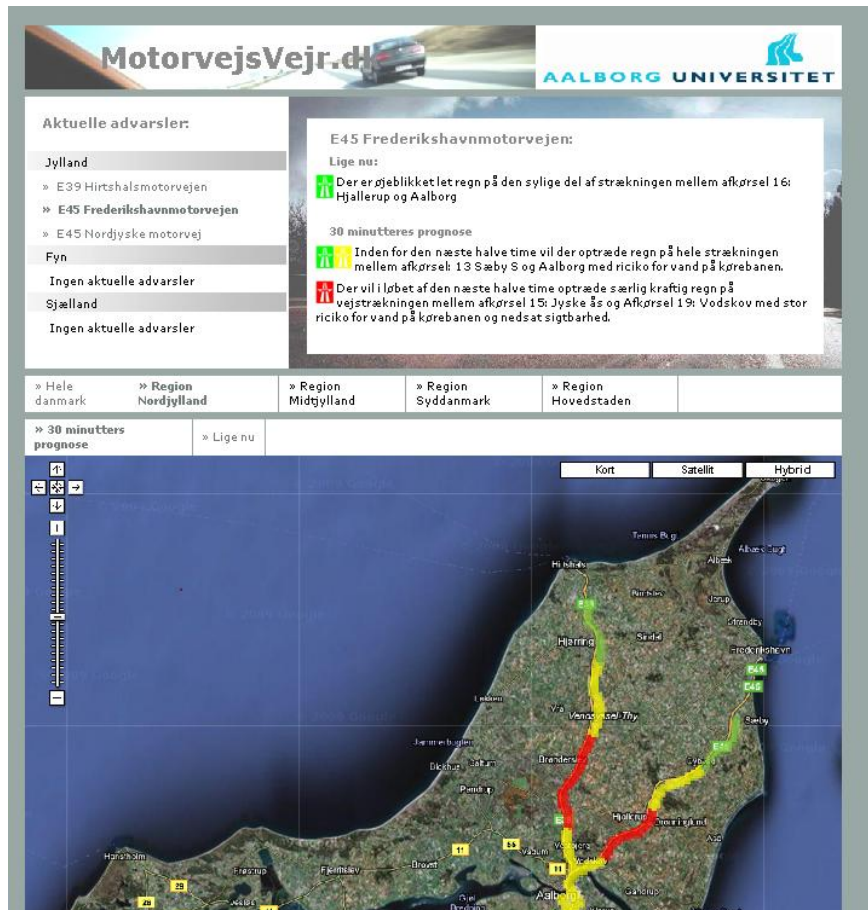
Vis et billede ad gangen:



© Aalborg Universitet
 Institut for byggeri og Anlæg
 Sohngaardsholmsvej 57
 DK-9000 Aalborg



Weather Informatics for Transportation Infrastructures (WITI)



VD - AAU
(2010 – 2012)

Advance prognosis tool for extreme precipitation along roads , highways and railroads

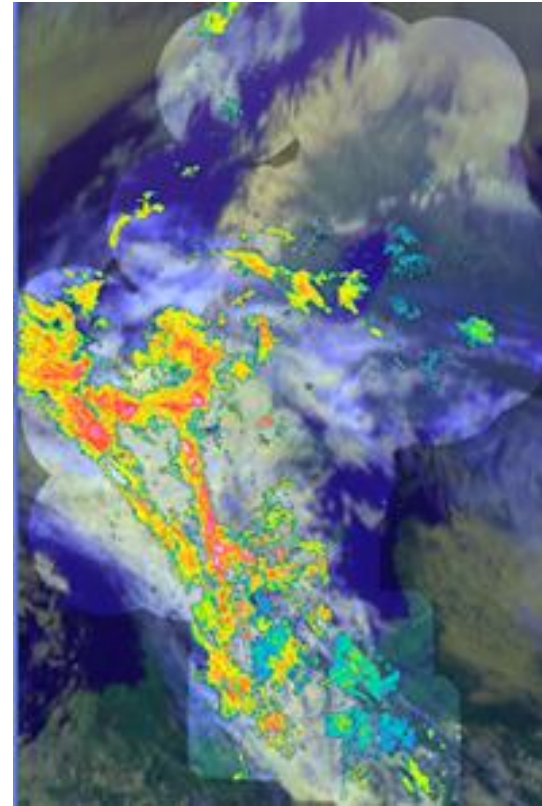
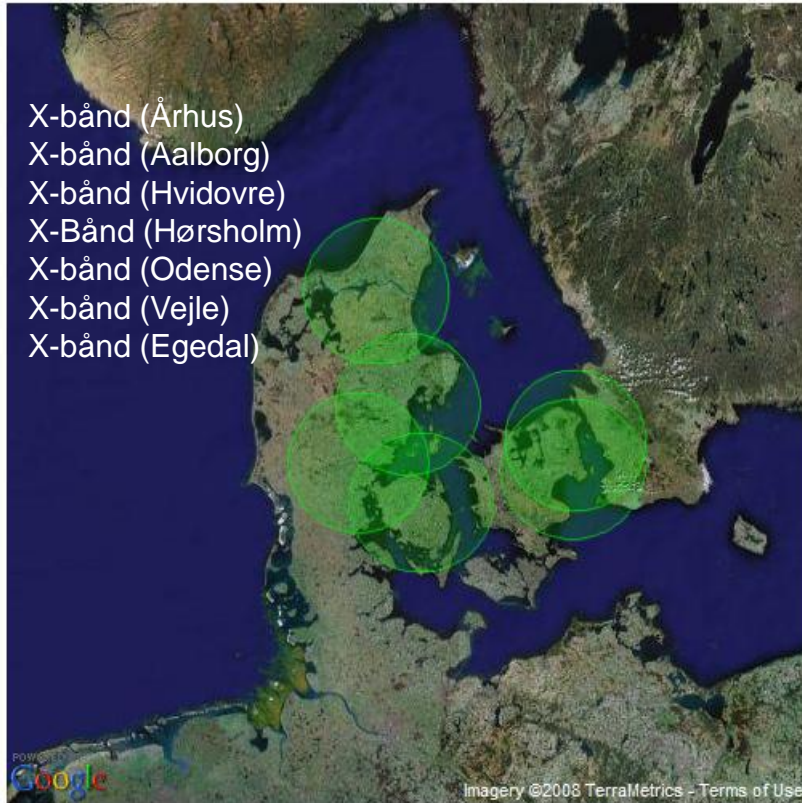
Combination with risk assessment tools (e.g Blue Spot analysis)

Precursor to hydrological and hydraulic models for flooding and erosion

Optimization of water treatment of runoff in relation to road construction

Bicyclist weather !

Online data availability for project



Marine X-band Radars, range 60 km
500 x 500 m , 100 x 100 m spatial resolution,

Baltrad !

What do we need (wish 😊) from baltrad?

- **Real time data access (within 1 minute ???)**
- **Quality control**
 - **Quality of primary radar data**
 - **Quality of the composites and derived products**
 - **QPE quality index (Guard Dog)**
- **Real time QPE – adjustment of radar data against rain gauges.**
- **Uncertainty estimates – what is for example the 95% confidence interval on QPE ?**