



# Introduction into WMO Information System (WIS)



## Agenda

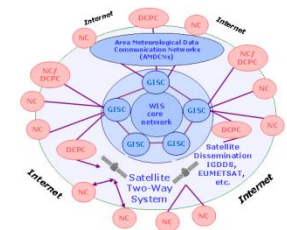
- Welcome
- Brief Introduction into WIS
- Use Case – Find Radar products
- Example Integration
- Further WIS Ressources
- Q&A





## WIS (WMO Information System) – Brief Introduction

- WIS
  - Overarching approach to manage data and information
  - Use international standards for protocol, hardware and software
  - Build on the existing WMO Global Telecommunication System (GTS), with a special attention to a smooth and coordinated transition
  - Provide time-critical data exchange, as well as data access and retrieval services
  - Support all WMO and related international programmes
- Evolving in two parallel parts
  - Part A: GTS continued consolidation and further improvements for data and products delivery
  - Part B: Extension of services through flexible data discovery, access and retrieval services, as well as flexible timely delivery
- Types of Centres
  - WIS NCs – every WIS NC must supply metadata for their data and products
  - DCPCs (Data Collection or Production Centre) – collect, disseminate, add value to, and archive regional or programme-specific data and products. DCPC maintain catalogue of their metadata
  - GISCs (Global Information System Centre) – global metadata catalogue and 24 cache





## Discover Access and Retrieval - 1

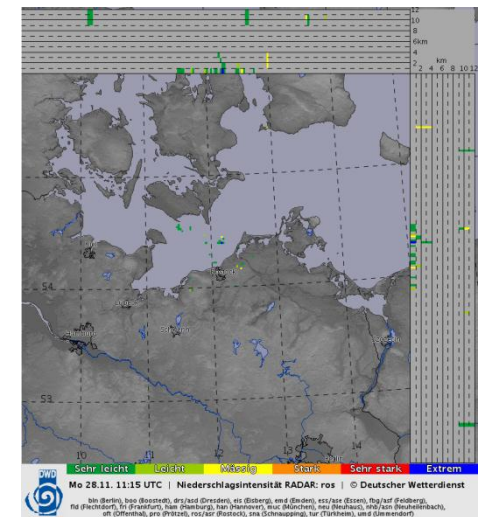
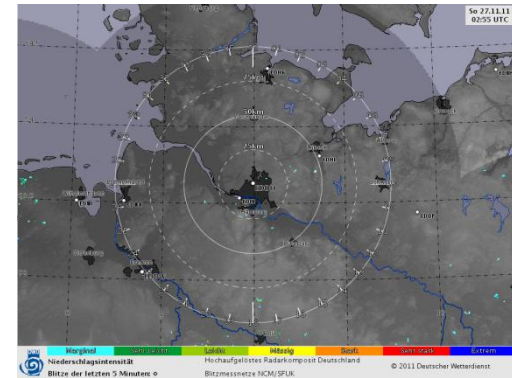
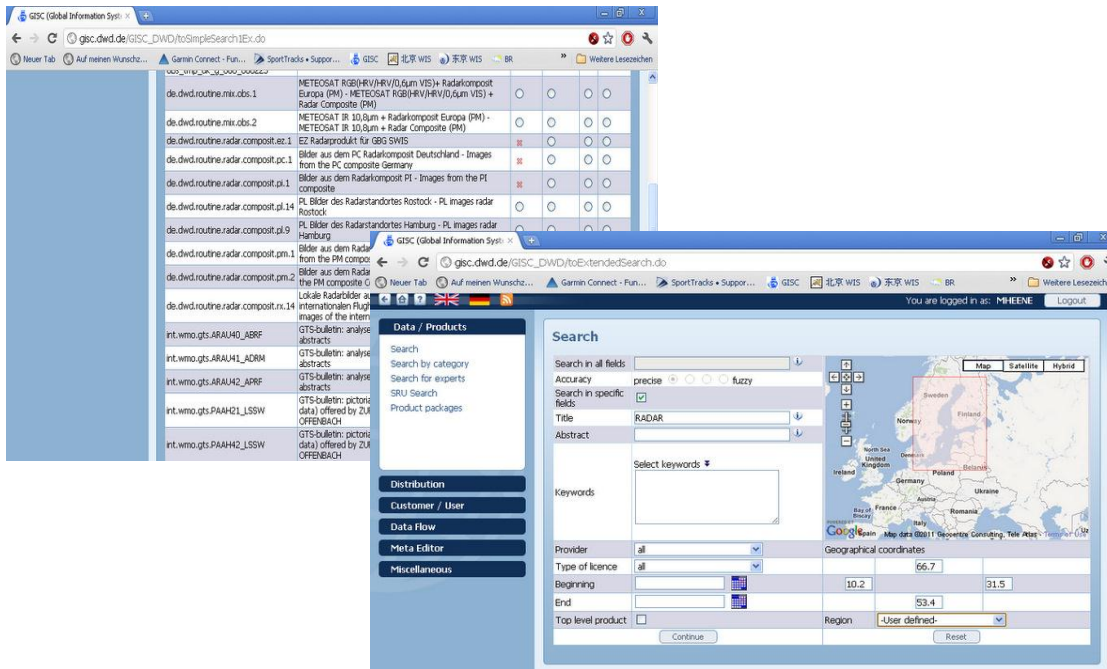
```
"6","NORRKOPING","LATVIA","RIGA","11/06/2008","PACH40","EVRB","HDF5","H+00,H+10,H+20,H+30,H+40,H+50","RADAR DATA FROM RIGA"  
"6","NORRKOPING","NORWAY","OSLO","11/08/2011","IUPD36","ENMI","FM 94-XII BUFR","H+00,H+15,H+30,H+45","RADAR WIND PROFILE DATA OF ANDOYA"  
"6","NORRKOPING","NORWAY","OSLO","11/08/2011","IUPD37","ENMI","FM 94-XII BUFR","H+00,H+15,H+30,H+45","RADAR WIND PROFILE DATA OF HASVIK"  
"6","NORRKOPING","NORWAY","OSLO","11/08/2011","IUPD38","ENMI","FM 94-XII BUFR","H+00,H+15,H+30,H+45","RADAR WIND PROFILE DATA OF STAD"  
"6","NORRKOPING","NORWAY","OSLO","11/08/2011","IUPD39","ENMI","FM 94-XII BUFR","H+00,H+15,H+30,H+45","RADAR WIND PROFILE DATA OF HURUM"  
"6","OFFENBACH","GERMANY","OFFENBACH","06/07/2007","IUPD40","EDZW","FM 94-XIII","AS REQUIRED","10204","SINGLE RADAR VERTICAL W
```

- VolC1: 53 hits for RADAR, 47 hits in RA VI
- How to access the data now?
- How to retrieve the data?
- If questions, who is the contact person?





## Discover Access and Retrieval - 2



- WIS offers comfortable search functions (text, geographic, ...)
- WIS offers more products – (e.g. 263 hits for RADAR)
- Ad-hoc data access (if policy allows) and subscription
- Metadata describes the product



## Example Integration

- Daniel created during last CBS session a metadata record and we uploaded it to GISC DWD
- MD record was synchronized with the other GISC



## WIS - Ressources

### Operational GISC

- CMA <http://wisportal.cma.gov.cn/>
- JMA <http://www.wis-jma.go.jp>
- DWD <http://gisc.dwd.de>

### Ressources:

- WIS Home page - <http://www.wmo.int/pages/prog/www/WIS/>
- WIS Wiki - <http://www.wmo.int/pages/prog/www/WIS/wiswiki/tiki-index.php>
- WIS Reference Documents (Spec., ...) - [http://www.wmo.int/pages/prog/www/WIS/ref\\_docs\\_en.html](http://www.wmo.int/pages/prog/www/WIS/ref_docs_en.html)

### Guidelines for the Demonstration of WIS Centre Capabilities

- [http://www.wmo.int/pages/prog/www/WIS/circular\\_letters\\_questionnaires.html](http://www.wmo.int/pages/prog/www/WIS/circular_letters_questionnaires.html)



# Q&A

